



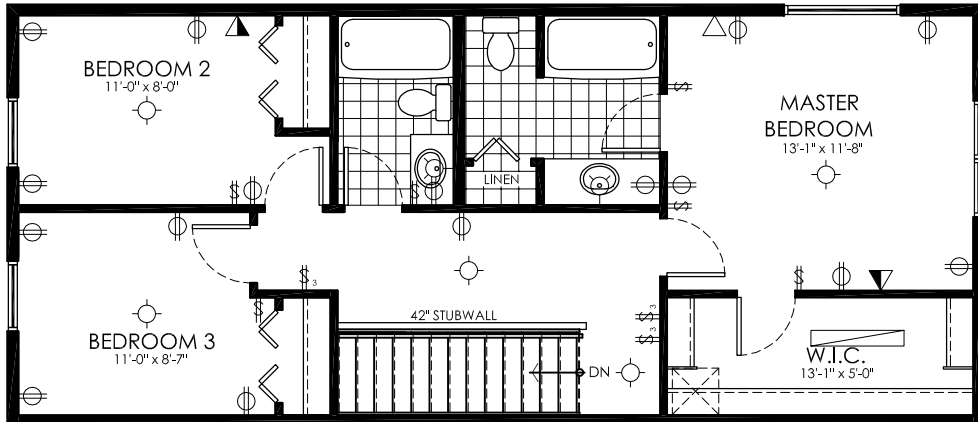
The Hazelwood II

18' x 48'

3Bedroom + Optional Flex room

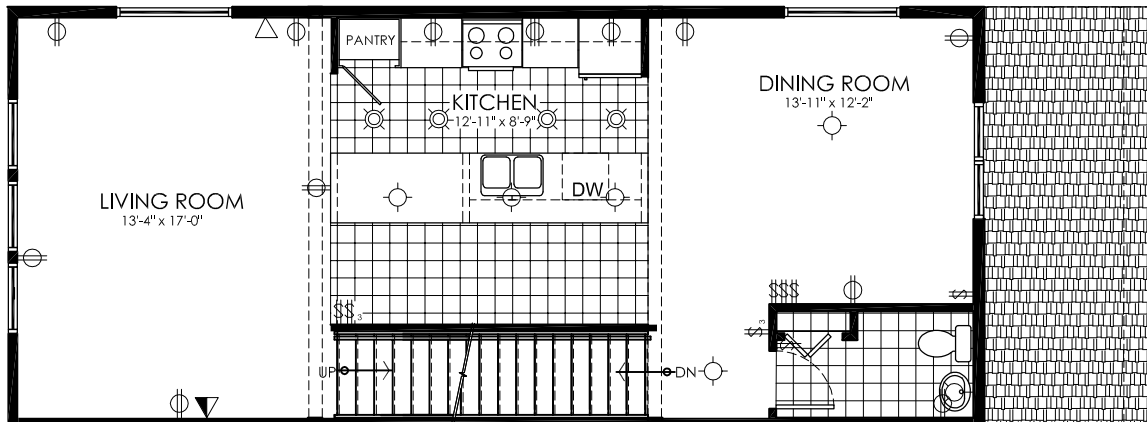
Total 1816 sq.ft.

Unit #

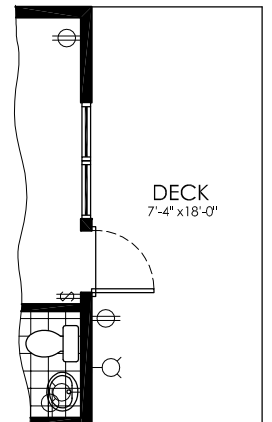


- ▽ phone
- ▼ tv/internet
- ⊕ duplex receptic
- ⌘ light switch
- ⊕ 220 V recp.
- ceiling mount or pendant
- ⊗ pot light
- ⊕ vanity light / wall sconce
- ▬ fluorescent light
- ⌘ 3 way light switch

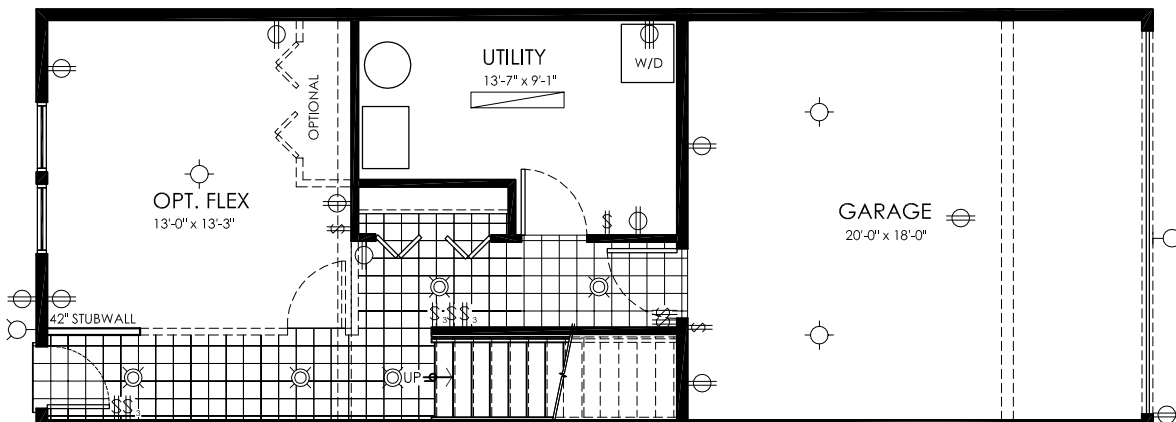
Third Floor



Second Floor



OPTIONAL DECK



Main Floor

Sketch only, not for construction purposes.
Plans, electrical layout and prices are subject to some variation and may change without notice.
The Builder reserves the right to change material or specifications but guarantees that change will be of equal or of similar value. (04/27/11)

/
Initials